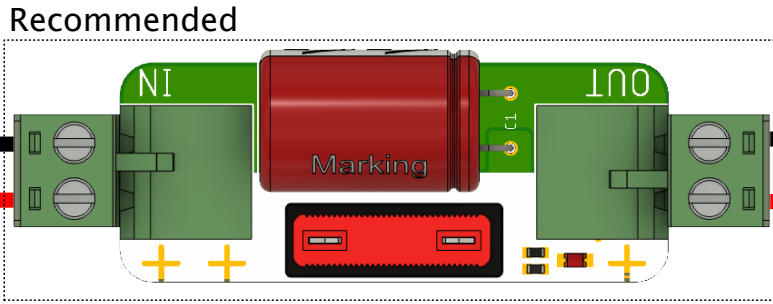
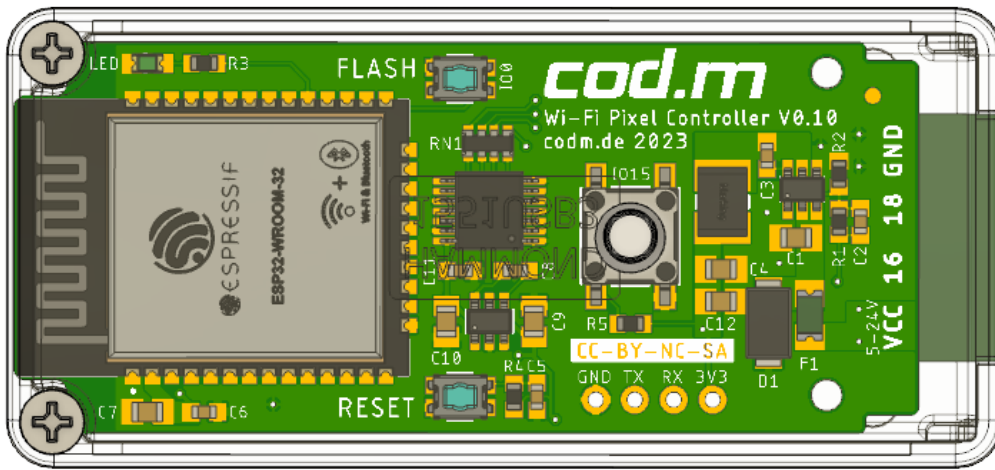


Wiring Scheme WLED Controller V0.10 WS281x / SK6812 / etc. for 5V, 12V and 24V

Choose the Power Supply dependant on LED count.

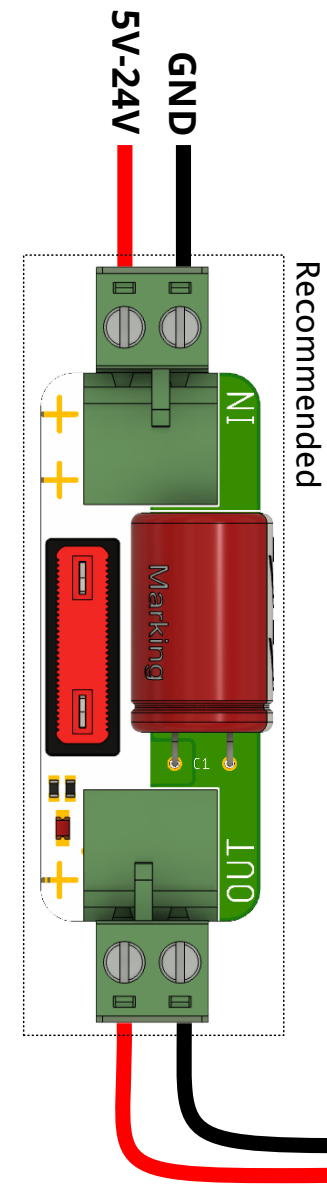
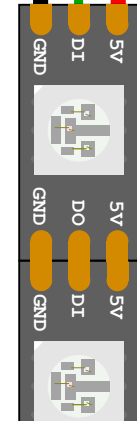


cod.m Fused Power Capacitor Board V0.4
Art-Nr. 90062 1000µF, max. 35V/10A

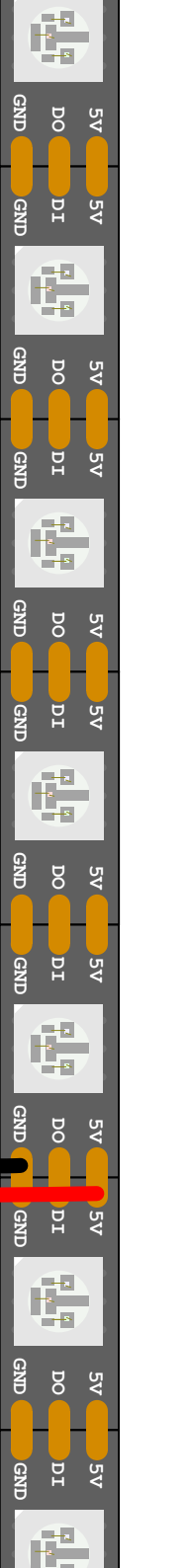


cod.m WLED Controller V0.10 (WLAN/Wi-Fi), Art-Nr: 90060

<2m



Recommended



At 60 LEDs/m@5V feed in power every 2.5m, at 60 LEDs/m@12V every 5m. For every power connection we recommend the Fused Power Capacitor Board. Choose fuses accordingly.